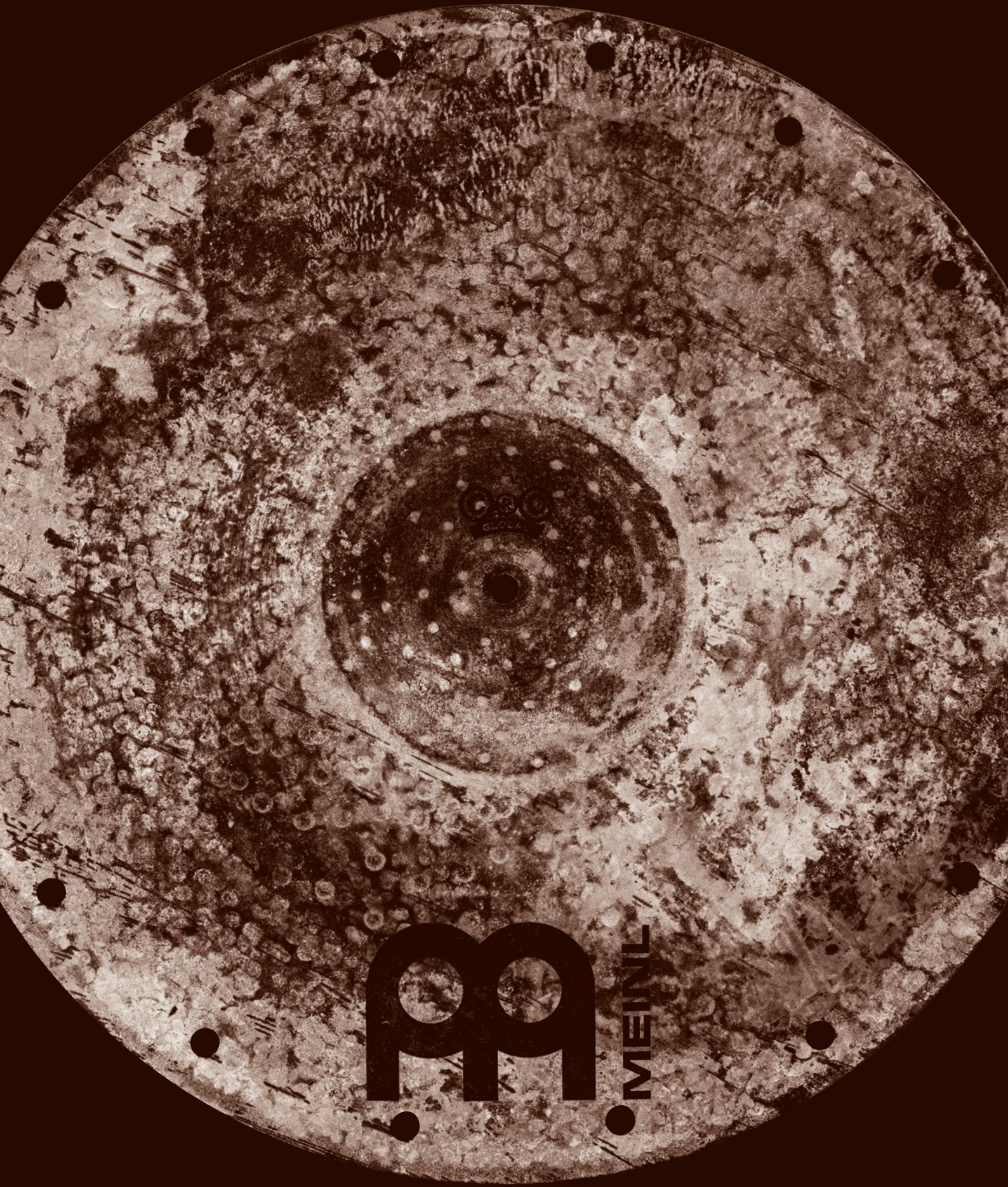




# Byzance

21" C Squared Ride





**M** MEINIL

## TABLE OF CONTENTS

BYZANCE FOUNDRY RESERVE	02
BYZANCE DUAL	04
BYZANCE EXTRA DRY	06
BYZANCE DARK	08
BYZANCE VINTAGE	10
BYZANCE TRADITIONAL	12
BYZANCE JAZZ	14
BYZANCE BRILLIANT	16
THE ARTIST CONCEPT MODELS	18
PURE ALLOY CUSTOM	20
PURE ALLOY	21
CLASSICS CUSTOM DARK SERIES	22
CLASSICS CUSTOM BRILLIANT SERIES	24
CLASSICS CUSTOM EXTREME METAL SERIES	26
HCS BRONZE	28
HCS	30
GENERATION X	32
CANDELA PERCUSSION CYMBALS	34
SYMPHONIC CYMBALS	36
MARCHING CYMBALS	38
CYMBAL BAGS & CASES	40
STICK BAGS, HOLDERS & DRUMMER GLOVES	41
CYMBAL CLOCK	41
PRACTICE PADS & MUTES	42
DRUM RUGS	43
DRUM GEAR & HARDWARE	44
HARDWARE	46
CLEAN & PROTECT	47



# BYZANCE

xx **FOUNDRY RESERVE** xx

MADE IN TURKEY

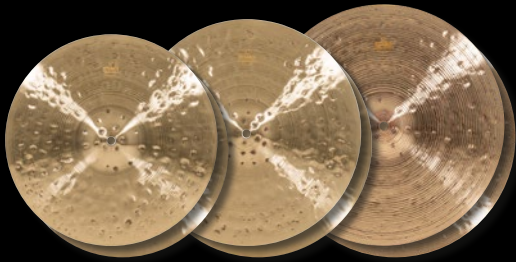
**A** LIMITED collection of our finest hand-made Turkish cymbals, Byzance Foundry Reserve showcases the stunning, sonically rich works of art our cymbalsmiths create. Tonality and nuance are added with extra hand-hammering, resulting in deep craters that riddle the surfaces. Coupled with wide blade lathing, these cymbals produce a clear, pronounced stick-attack note over a lush bed of even undertones.

Made in Turkey from B20 bronze, hand-hammered into shape, wide blade lathing, and traditional finish.



*Each Byzance Foundry Reserve comes with a pair of Meinl Stick & Brush Standard 5A Drumsticks, a pair of 100% cotton handling gloves, a signed certificate of authenticity, and a personal letter from Mr. Reinhold Meinl.*

HIHATS



14" B14FRH 15" B15FRH 16" B16FRH

CRASHES



18" B18FRC 19" B19FRC 20" B20FRC

RIDES



20" B20FRR 22" B22FRR 24" B24FRR

RIDES LIGHT

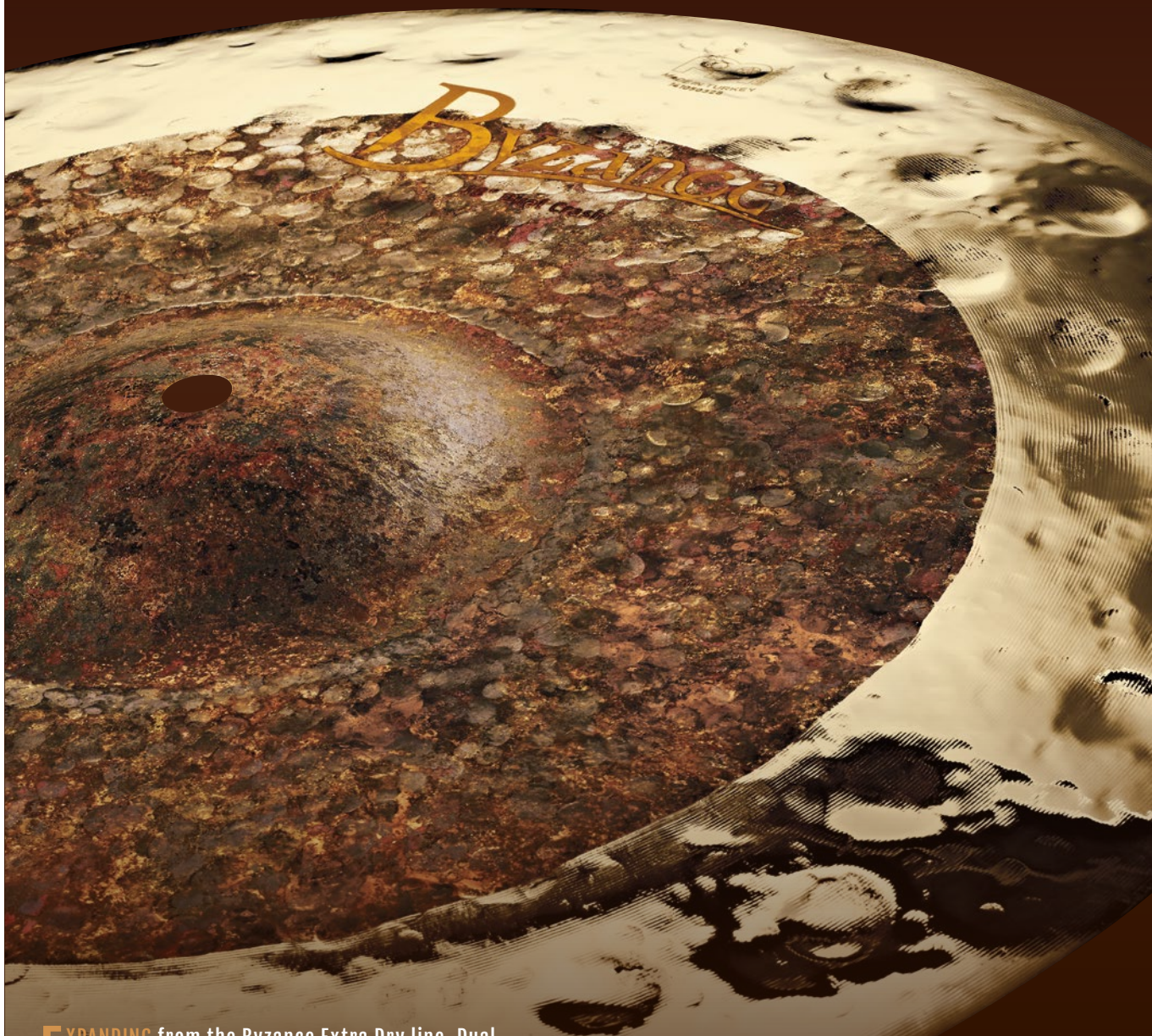


20" B20FRLR 22" B22FRLR 24" B24FRLR



# Byzance

DUAL



**E**XPANDING from the Byzance Extra Dry line, Dual cymbals have quickly risen in popularity and become instantly recognizable for their unique look and sound. To start, the center is raw, bearing hand-hammered markings, while the edge is lathed and buffed to a brilliant finish. The sound is similar to the look: trashy, earthy and low at first, ending with a flash of explosive brilliance.

Made in Turkey from B20 bronze, hand-hammered into shape, raw finish in center, and narrow blade lathing with brilliant finish on edges only.

*What is a Multi-Trash cymbal? This versatile cymbal makes an excellent stand-alone trash crash or extra large splash and easily stacks with another cymbal providing even more options. It can replace the top or bottom hi-hat cymbal for a trash hat effect or be combined with the top hi-hat cymbal for a crunchy tri-hat effect.*



**SPLASH**



10" B10DUS

**MULTI-TRASH**



14" B14DUMUTR

**CRASHES**



16" B16DUC



18" B18DUC



19" B19DUC

**HIHATS**



14" B14DUH



15" B15DUH

**CHINAS**



16" B16DUCH



18" B18DUCH



20" B20DUCH

**CRASH-RIDES**



20" B20DUCR

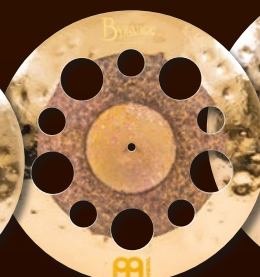


22" B22DUCR

**TRASH CRASHES**



16" B16DUTRC



18" B18DUTRC



20" B20DUTRC

# Byzance

EXTRA DRY

Byzance  
EXTRA DRY  
16\"

**A**LTHOUGH they appear to be raw, Byzance Extra Dry cymbals are extremely refined. Designed to be dry, fast, trashy, and low, this is one of the most intriguing voices within Byzance that attracts many drummers. The crashes, splashes, and china cymbals all explode and unleash a gritty texture from within, while the hihats and rides are crisp in definition.

Made in Turkey from B20 bronze, hand-hammered into shape, and raw finish. The bottom side of hihats, crashes, splashes and chinas are lathed, but the rides are left unlathed except for the Transition Ride which is lathed and polished on the bottom to a brilliant finish.

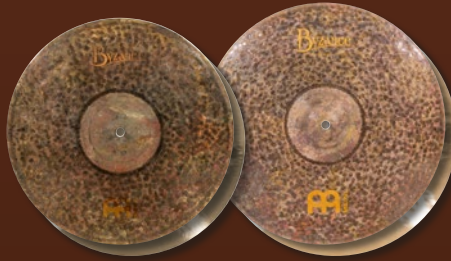


**SPLASHES**



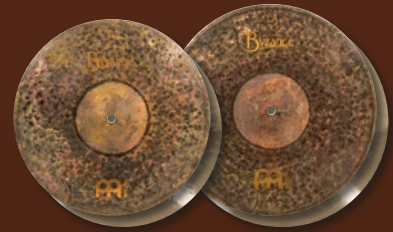
10" B10EDS 12" B12EDS

**HIHATS MEDIUM THIN**



15" B15EDMTH 16" B16EDMTH

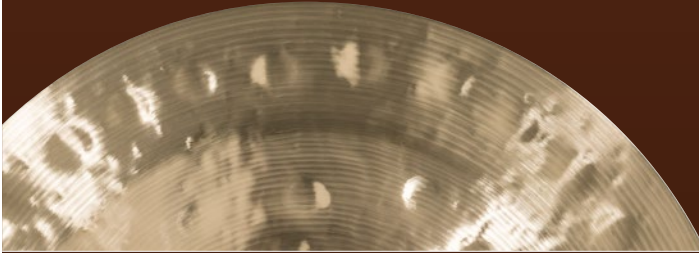
**HIHATS MEDIUM**



13" B13EDMH 14" B14EDMH

**CHINAS**

*The underside of each china is fully lathed, while the top side remains unlathed, resulting in a sharper attack and warm lows.*



16" B16EDCH 18" B18EDCH 20" B20EDCH

**TRASH CRASH**

**NEW**



18" B18EDTRC

**CRASHES THIN**



16" B16EDTC 17" B17EDTC 18" B18EDTC 19" B19EDTC 20" B20EDTC

**RIDES THIN**



20" B20EDTR 22" B22EDTR

**RIDES MEDIUM**



20" B20EDMR 22" B22EDMR

**TRANSITION RIDE**

*Mike Johnston's signature ride*

*This ride has a brilliant, lathed bottom combined with an unlathed top that is slightly polished for a unique look. Opens easily for crashing, with the bell very much integrated in the overall sound.*



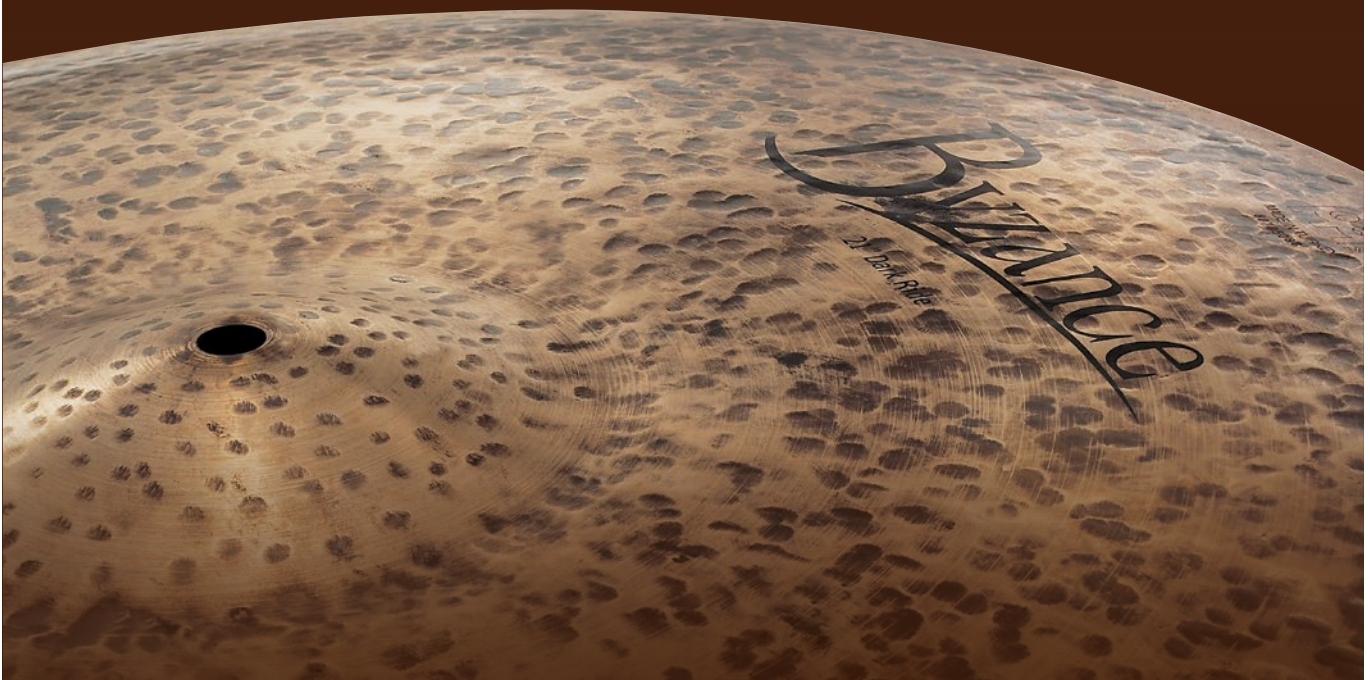
21" B21TSR

# Byzance

## DARK

**H**AND-HAMMERED and completely unlathed, Byzance Dark cymbals immediately hit the sweet spot with crashes that open up just enough, then get out of the way. The hihats and rides provide clarity, cut and volume, along with a prominent dark tone brought out by their unique surfaces.

Made in Turkey from B20 bronze and hand-hammered into shape. The surfaces here are left unlathed creating the dark finish except for the Spectrum Hihats and Ride which are partially lathed in a spiral pattern.



### SPLASHES



8" B8DAS 10" B10DAS

### HIHATS



13" B13DAH 14" B14DAH 15" B15DAH

### SPECTRUM HIHATS

*Rodney Holmes' signature hihats*



13" B13SH 14" B14SH

### BIG APPLE DARK HIHAT

*Small bell and thin top produce a warm, smooth tonality with dark articulation. Pair them with your favorite Big Apple ride for a highly textured expression of sound.*



15" B15BADAH

CRASHES



16" B16DAC 17" B17DAC 18" B18DAC 20" B20DAC

TRASH CRASHES



18" B18DATRC 20" B20DATRC

CHINA



18" B18DACH

RIDES



20" B20DAR 21" B21DAR 22" B22DAR

BIG APPLE DARK RIDES

*Dry articulation and crashability together with a bell that is perfectly suited for small rooms and clubs.*



20" B20BADAR 22" B22BADAR 24" B24BADAR

RAW BELL RIDES



20" B20RBR 22" B22RBR

SPECTRUM RIDE

*Rodney Holmes' signature ride*  
*Extremely versatile ride due to the partial lathing, which allows the cymbal to balance a dry attack and light wash in a medium weight.*



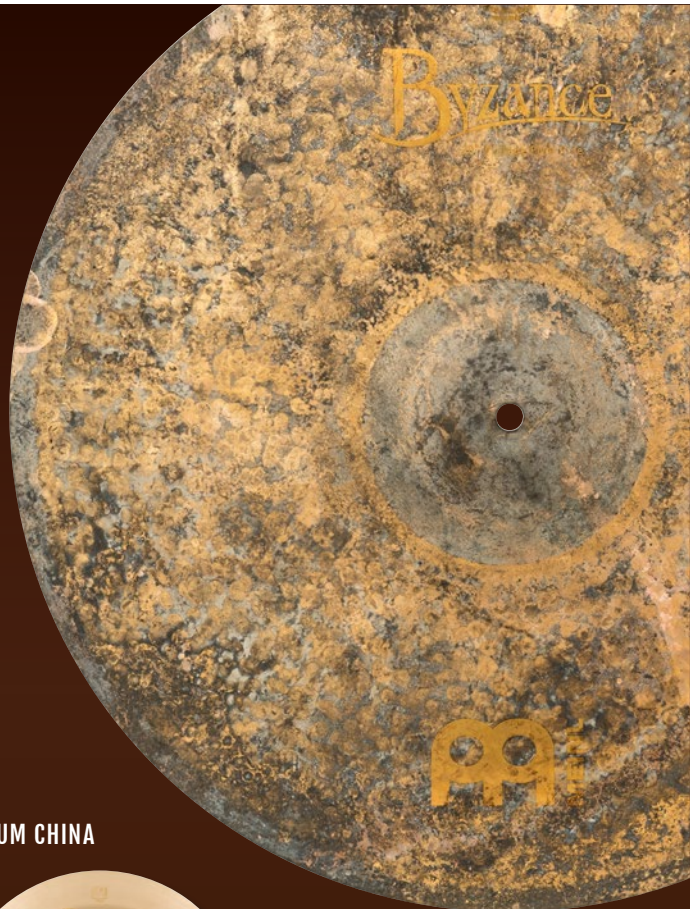
22" B22SR

# Byzance

## VINTAGE

**C**RRAFTED with age in mind, the Vintage voice within Byzance has unique features that simulate the aging process of a cymbal to couple relic sounds with modern appeal. The Vintage line was born from the Sand Ride, a flagship cymbal developed with Meinl Cymbals artist, Benny Greb; now, it includes a wide array of cymbals which have helped to define the Meinl sound.

Made in Turkey from B20 bronze and hand-hammered into shape. Sand models feature narrow blade lathing and a sandblasted finish, whereas Vintage Pure models are unlathed and raw.



### EQUILIBRIUM HIHAT

*Matt Garstka's signature hihat*

Various areas sandblasted and lathed to achieve an overall balance of dryness and sustain, as well as warmth and cut. Six holes around the bottom bell increase foot chick projection.



14" B14EQH

### EQUILIBRIUM CHINA

*Matt Garstka's signature china*



20" B20EQCH

### SPLASH



10" B10VS

### TRASH SPLASH



10" B10TRS

### TRASH CRASHES



16" B16TRC

18" B18TRC

20" B20TRC

### CRASHES



16" B16VC

18" B18VC

20" B20VC

22" B22VC

### C SQUARED RIDE

*Chris Coleman's signature ride*



21" B21C2R

PURE HIHATS



14" B14VPH 15" B15VPH 16" B16VPH

PURE CRASHES



18" B18VPC 20" B20VPC

PURE TRASH CRASH

NEW



18" B18VPTRC

PURE RIDES



20" B20VPR 22" B22VPR

PURE RIDES LIGHT



20" B20VPLR 22" B22VPLR

SAND HATS

Benny Greb's signature hats



14" B14SAH 16" B16SAH

SAND CRASH THIN

Benny Greb's signature crash



18" B18SATC

SAND CRASH MEDIUM

Benny Greb's signature crash



18" B18SAMC

SAND CRASH-RIDE

Benny Greb's signature crash-ride



22" B22SACR

SAND RIDES

Benny Greb's signature rides

A sandblasted top and partially lathed bottom combine for a dry stick attack with very quick decay; the bell has a clear and articulate voice.



20" B20SAR 22" B22SAR

SAND CYMBAL SET

Benny Greb's signature cymbals

The Sand Set is a versatile selection of Benny's most popular signature cymbals. The set includes a pair of 14" Sand Hats, an 18" Sand Thin Crash, and a 20" Sand Ride. All three cymbals have a wide range of applications to meet many drummer's playing styles as well as musical genres.



BV-141820SA [14" Sand Hat + 18" Sand Crash Thin + 20" Sand Ride]

# Byzance

## TRADITIONAL

**S**TARTING with hand-hammering and following with hand lathing in Turkey, the word 'traditional' accurately describes their hand forged shape and deeply rooted sound. The Traditional series features our broadest voice for Byzance, with a wide variety of sizes and weights that blend into any musical setting.

Made in Turkey from B20 bronze, hand-hammered into shape, narrow blade lathing, and traditional finish.



### SPLASHES



6" B6S    8" B8S    10" B10S    12" B12S

### CHINAS



14" B14CH    16" B16CH    18" B18CH    20" B20CH    22" B22CH

### FLAT CHINA



18" B18FCH

### HIHAT THIN



14" B14TH

### HIHATS MEDIUM



10" B10MH    13" B13MH    14" B14MH    15" B15MH    16" B16MH

### HIHAT HEAVY



14" B14HH

### CRASHES THIN



14" B14TC    15" B15TC    16" B16TC    17" B17TC    18" B18TC

CRASHES MEDIUM THIN



16" B16MTC

17" B17MTC

18" B18MTC

19" B19MTC

CRASHES MEDIUM



16" B16MC

18" B18MC

20" B20MC

21" B21MC

22" B22MC

HAMMERED CRASHES EXTRA THIN

Large and deep hammer blows are added to create a darker and trashier tonality.



18" B18ETHC

20" B20ETHC

22" B22ETHC

NEW

TRASH CRASHES

NEW

NEW



16" B16TTRC

18" B18TTRC

RIDES MEDIUM



20" B20MR

21" B21MR

22" B22MR

23" B23MR

24" B24MR

RIDES HEAVY



20" B20HR

21" B21HR

22" B22HR

23" B23HR

POLYPHONIC RIDE

A thin edge for easy crashes, lathed body for sweet stick response, and raw bell for projection to create an extremely versatile cymbal.



21" B21POR

# Byzance

## JAZZ



### SPLASH



10" B10JS

### HIHATS THIN



13" B13JTH 14" B14JTH 15" B15JTH

**B**YZANCE Jazz offers a deep well of expressive cymbals that draws players in. The hi-hats have a smooth and subtle response, and the crashes are known for a buttery feel that only develops from their hand-hammered profiles. In addition, many unique and complex ride cymbals have been created within this line to help you find your voice behind the kit.

Made in Turkey from B20 bronze, hand-hammered into shape, narrow blade lathing, and traditional finish.

### CRASHES EXTRA THIN



16" B16JETC 17" B17JETC 18" B18JETC

### CRASHES THIN



16" B16JTC 17" B17JTC 18" B18JTC 20" B20JTC

### CRASHES MEDIUM THIN



16" B16JMTC 17" B17JMTC 18" B18JMTC 20" B20JMTC

### RIDES EXTRA THIN



20" B20JETR 22" B22JETR

### RIDES THIN



20" B20JTR 22" B22JTR

### RIDES MEDIUM THIN



20" B20JMTR 22" B22JMTR

### RIDES MEDIUM



20" B20JMR 22" B22JMR



CHINA RIDE



22" B22JCHR

TRADITION HIHAT



14" B14TRH

TRADITION CRASH LIGHT



18" B18TRLC

TRADITION RIDES



20" B20TRR 22" B22TRR

TRADITION RIDES LIGHT



20" B20TRLR 22" B22TRLR

TRADITION FLAT RIDE



22" B22TRFR

BIG APPLE RIDES

*Sweet articulation and crashability together with a bell that is perfectly suited for smaller rooms and clubs.*



20" B20JBAR 22" B22JBAR

NUANCE RIDE

*Ralph Peterson's signature ride*

*Six rivets clustered near the edge create a unique, old-school sizzle effect.*



21" B21NUR

CLUB RIDES

*Wolfgang Haffner's signature rides*



20" B20JCR 22" B22JCR

SYMMETRY RIDE

*Ralph Peterson's signature ride*



22" B22SYR

MONOPHONIC RIDE



22" B22MOR

# Byzance

BRILLIANT



**B**UILDING on the Traditional line, Byzance Brilliant cymbals are polished to create a mirrorlike finish for a stunning look on stage. The sonic result is a slightly refined sound with a smoother, lower frequency response and added shimmer. The Heavy Hammered models feature extra weight for cut and volume.

Made in Turkey from B20 bronze, hand-hammered into shape, narrow blade lathing, and brilliant finish.

## SPLASHES



6" B6S-B 8" B8S-B 10" B10S-B

## CHINAS



14" B14CH-B 16" B16CH-B 18" B18CH-B 20" B20CH-B

## TRASH CRASHES



16" B16TRC-B 18" B18TRC-B

## CRASHES THIN



14" B14TC-B 15" B15TC-B 16" B16TC-B 17" B17TC-B 18" B18TC-B

## CRASHES MEDIUM THIN



16" B16MTC-B 17" B17MTC-B 18" B18MTC-B 19" B19MTC-B

## CRASHES MEDIUM



16" B16MC-B 18" B18MC-B 20" B20MC-B

## RIDES MEDIUM



20" B20MR-B

21" B21MR-B

22" B22MR-B

## RIDES HEAVY



20" B20HR-B

22" B22HR-B

## HIHATS MEDIUM



13" B13MH-B

14" B14MH-B

## FAST HIHATS

*Thomas Lang's signature hihats*

*Holes around the edge of both the top and bottom cymbal allows the air inside the hihats to escape more quickly, creating a faster and stronger chick sound.*



13" B13FH

14" B14FH

## SERPENTS HIHATS

*Derek Roddy's signature hihats*



13" B13SH-B

14" B14SH-B

## SERPENTS RIDE

*Derek Roddy's signature ride*



21" B21SR-B

## PURE METAL RIDE

*Chris Adler's signature ride*



24" B24PMR-B

## HEAVY HAMMERED HIHAT



14" B14HHH-B

## HEAVY HAMMERED CRASHES



18" B18HHC-B

20" B20HHC-B

22" B22HHC-B

## HEAVY HAMMERED CHINAS



18" B18HHCH-B

20" B20HHCH-B

## HEAVY HAMMERED RIDE

*The extra weight and hammering increases projection and volume while maintaining musical tonality.*



22" B22HHR-B

# THE ARTIST CONCEPT MODELS

**WORKING** closely with some of the most creative drummers on the planet, Artist Concept Models were born from collaborations with our Meinl Cymbals artists to develop new and unique sounds. Each process involved combining different cymbals to create effect stacks or auxiliary hihats which best met that artist's vision. In some cases, multiple series or alloys were used to find the perfect result. Read on to find out what the artists themselves have to say about their individual concept model.



## BENNY GREB CRASHER HATS

"I wanted something that was super short, dry, clear and high frequency but still very dynamic that could fulfill a whispering shaker-like role in the music. Tough to get! So we had to create something completely unique. Four separate cymbals sandwiched together. They have different shoulders so they collapse against each other at every hit. The result is incredible. A very unique sound that blends beautifully with ghost notes and other subdivisions, but can also make a very percussive statement. They are part of my sound. I absolutely love them!"



8"/8" AC-CRASHER [With X-Hat Auxiliary Hihat Arm]

## MATT GARSTKA FAT STACK

"This stack cuts through the mix with a crunchy bite. With no ring the sustain is dry and pleasing to the ear. Its trashy quality is maintained through a wide variety of tensions, with my personal favorite being a light tension that gives its Fat Stack namesake."



18"/16" AC-FAT



## ANIKA NILLES DEEP HATS

"What I really like about my Deep Hats is that they have so many musical applications. They fill the sonic gap between my main hihats, and my crashes. I play them half open as a time keeper, very similar to crash-riding, however the Deep Hats sound softer and more articulated. That is something I prefer."



18"/18" AC-DEEP [With X-Hat Auxiliary Hihat Arm]





*Thomas Lang*

### THOMAS LANG SUPER STACK

"Its fierceness cuts through any wall of sound and allows you to slice through even the most crowded soundscape. When played softly at the edge, it produces a wide and washy sizzle, perfect for accents and punctuations at a more moderate volume. When played with the stick tip at the shoulder, its short and piercing sound is reminiscent of a trashy hihat. The Super Stack is super loud, super fast, and super short. It allows the drummer to override and supersede even the most dense frequency chaos and make a clear and concise percussive statement in every musical situation. This is the most versatile stack combination you'll find."



18"/18" AC-SUPER

### MATT HALPERN DOUBLE DOWN STACK

"To me they are the culmination of the best sounds I've been able to produce and utilize in both live and studio settings. You can configure the stack so it cuts through the loudest of music in the loudest of venues, or you can change it up and use it in the most dynamic of musical situations."

*Matt Halpern*



17"/18" AC-DOUBLEDOWN



### LUKE HOLLAND BULLET STACK

"Quick as a bullet, hurts like one too. Perfect for when you need to cut and make your point. What I love about the Bullet Stack is that no matter how quickly you need it to be present and then disappear, it always delivers."

*Luke Holland*



12"/16" AC-BULLET

PURE ALLOY  
  
 MEINL  
 MADE IN GERMANY  
 CUSTOM

**P**URE ALLOY CUSTOM is a series of medium-thin weight cymbals. They produce a slightly softer attack with a warmer body and faster decay, while maintaining the bright shimmer and sustain that Pure Alloy is known for.

Made in Germany from Pure Alloy bronze and hammered into shape. To make these cymbals stand out, we applied a new finish on top called custom smoked-bronze and polished the bottom to a brilliant finish. These cymbals will be a unique and beautiful addition to any drum kit.

*Smoked-bronze top paired with a brilliant bottom*

SPLASH



10" PAC10S

HIHATS MEDIUM THIN



14" PAC14MTH 15" PAC15MTH

TRASH CRASH



18" PAC18TRC

CRASHES MEDIUM THIN

**NEW**



16" PAC16MTC 18" PAC18MTC 19" PAC19MTC 20" PAC20MTC

RIDES MEDIUM THIN



20" PAC20MTR 22" PAC22MTR

PURE ALLOY  
  
 MADE IN GERMANY  
 MEINL

**P**URE ALLOY cymbals sonically bridge the gap between the darker Byzance and brighter Classics Custom lines. Their shimmering, smooth sounds cut with agility and have a full range of tonality with medium sustain making them perfect for all dynamic levels. The crashes and rides have a perfect mix of effortless strength and a balanced wash, while the hihats carry a clean, refined definition.

Made in Germany from Pure Alloy bronze and hammered into shape. The traditional models feature pinpoint lathing creating the traditional finish.



SPLASH



10" PA10S

HIHATS MEDIUM



14" PA14MH 15" PA15MH

RIDES MEDIUM



20" PA20MR 22" PA22MR 24" PA24MR

CRASHES MEDIUM



16" PA16MC 18" PA18MC 19" PA19MC 20" PA20MC 22" PA22MC

TRASH CHINA



12" PA12TRCH

CHINA



18" PA18CH

# CLASSICS

## — CUSTOM —

### DARK SERIES

**A**GGRESSIVE and loud, but with a dark and warm tone, Classic Custom Dark cymbals are like nothing you have seen or heard before. Here, the cutting nature of Classics Custom is met with a shadowy and intense wash that envelops your playing with a complex, dark tone. The wide assortment of models and cymbal types are sure to help you find your sound whether you are adding on or building a complete set.

Made in Germany from B10 bronze alloy, lathe formed profile, extra hammering, wide blade lathing, and dark finish.

*Why do trash crashes have holes?  
By removing material from a cymbal, sound waves travel quickly and escape from the cymbal, creating the fast decay these cymbals are known for. The size, shape, and placement of the holes will also affect how trashy or dark the end result will sound.*

#### SPLASHES



8" CC8DAS 10" CC10DAS 12" CC12DAS

#### TRASH SPLASHES



10" CC10DATRS 12" CC12DATRS

#### HIHATS



14" CC14DAH 15" CC15DAH 16" CC16DAH

#### HIHAT HEAVY

**NEW**



14" CC14HDAH

#### CHINA



18" CC18DACH

#### CHINA HEAVY

**NEW**



18" CC18HDACH

#### TRASH CHINAS



16" CC16DATRCH 18" CC18DATRCH



CRASHES



16" CC16DAC 17" CC17DAC 18" CC18DAC 19" CC19DAC 20" CC20DAC 21" CC21DAC

CRASHES HEAVY

NEW



16" CC16HDAC 18" CC18HDAC

NEW

TRASH CRASHES



14" CC14DATRC 16" CC16DATRC 18" CC18DATRC

TRASH STACKS



12" CC-12DASTK 16" CC-16DASTK 18" CC-18DASTK

RIDES



20" CC20DAR 22" CC22DAR

RIDE HEAVY



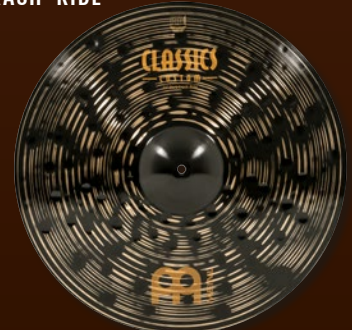
20" CC20HDAR

BIG BELL RIDE HEAVY



18" CC18HBBDR

CRASH-RIDE



22" CC22DACR

CYMBAL SET

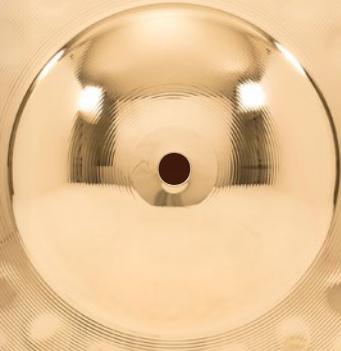


CCD141620 [14" Hihat + 16" Crash + 20" Ride]

# CLASSICS — CUSTOM —

## BRILLIANT SERIES

CLASSICS  
— CUSTOM —  
20" Medium Ride



**B**RIGHT and focused with a shimmering response, Classics Custom is best suited for drummers who want cymbals that speak with a clear voice. The mirrorlike finish looks incredible under stage lights and adds brilliance to the sound. With so many models to choose from, the extensive lineup provides plenty of options that will allow you to find the missing cymbal you need or build the foundation for a whole new setup.

Made in Germany from B10 bronze alloy, lathe formed profile, mirror smooth surface, and brilliant finish.

*The brilliant finish on all Classics Custom cymbals adds a shimmer and brilliance both to the sound as well as the look.*

### BELL



8" CC8B-B

### SPLASHES



8" CC8S-B 10" CC10S-B 12" CC12S-B

### TRASH SPLASH



12" CC12TRS-B

### HIHAT POWERFUL



14" CC14PH-B

### HIHATS MEDIUM



14" CC14MH-B 15" CC15MH-B

### CHINAS



16" CC16CH-B 18" CC18CH-B

TRASH CHINAS



16" CC16TRCH-B 18" CC18TRCH-B

CRASHES POWERFUL



16" CC16PC-B 18" CC18PC-B

CRASHES MEDIUM



14" CC14MC-B 15" CC15MC-B 16" CC16MC-B 17" CC17MC-B 18" CC18MC-B

TRASH CRASHES



16" CC16TRC-B 18" CC18TRC-B

TRASH STACKS



12" CC-12STK 16" CC-16STK

RIDES POWERFUL



20" CC20PR-B 22" CC22PR-B

RIDE MEDIUM



20" CC20MR-B

GHOST RIDE

*Brann Dailor's signature ride*



21" CC21GR

CYMBAL SET



CC141620 [14" Hi-hat Medium + 16" Crash Medium + 20" Ride Medium]

# CLASSICS CUSTOM

## EXTREME METAL SERIES

**M**ADE for drummers who need a tough cymbal that will endure a punishing set night after night while delivering plenty of volume and cut. Exactly as their name suggests, they are an extreme version of Classics Custom. They have the same brightness, clarity, and shimmer, but with a double-shot of punch and volume for more power and precision to climb above the roar of distortion-charged amps.

Made in Germany from B10 bronze alloy, lathe formed profile, mirror smooth surface, and brilliant finish.



Ever wonder why these cymbals are called 'Extreme Metal'? It's due to the extreme nature of volume and clarity produced by their heavier weights across all models in addition to specific features, like the extra-large megabells on ride cymbals. An often overlooked feature is the additional deep hammering on each cymbal. When we developed this line, we did not want to just create louder cymbals. Instead, our goal was to create louder cymbals that were still musical. By adding the extra hammer blows, we were able to darken the tonality enough to counteract the heavier weight's increased brightness. The result is a line of full-sounding cymbals with power, volume, and clarity.

## SPLASH



10" CC10EMS-B

## CHINAS



16" CC16EMCH-B 18" CC18EMCH-B

## HIHAT



14" CC14EMH-B

## CRASHES



16" CC16EMC-B 17" CC17EMC-B 18" CC18EMC-B 19" CC19EMC-B

## BIG BELL RIDE

The smaller diameter makes it easier to fit into a multi-cymbal set, but the huge bell is still extremely cutting and powerful.



18" CC18EMBBR-B

## RIDE



20" CC20EMR-B

## CYMBAL SET



CC-EM480 [14" Hi-hat + 18" Crash + 20" Ride]

# HCS

BRONZE  
MADE IN GERMANY



**HCS BRONZE** cymbals are bright and clear with a balanced sustain. Made from B8 bronze alloy and featuring additional lathing for refined clarity, these cymbals offer more value than any other cymbal line in our catalog. Whether you are just starting or looking to expand, there is a wide assortment of sounds to choose from.

Made in Germany from B8 bronze alloy, lathe formed profile, wide blade lathing, and traditional finish.



## BELL LOW



8" HCSB8BL

## BELL



8" HCSB8B

## BELL HIGH



8" HCSB8BH

## SPLASHES



8" HCSB8S 10" HCSB10S

## TRASH SPLASH



12" HCSB12TRS

## HIHATS



10" HCSB10H 13" HCSB13H 14" HCSB14H 15" HCSB15H

## HIHAT SOUNDWAVE



14" HCSB14SWH

## CHINA



18" HCSB18CH

## TRASH CHINAS



16" HCSB16TRCH 18" HCSB18TRCH

CRASHES



14" HCSB14C 16" HCSB16C 17" HCSB17C 18" HCSB18C

TRASH CRASHES



14" HCSB14TRC 16" HCSB16TRC 18" HCSB18TRC

CRASH-RIDES



18" HCSB18CR 20" HCSB20CR

RIDES



20" HCSB20R 22" HCSB22R

RIDE MEDIUM HEAVY



20" HCSB20MHR

RIDE HEAVY



20" HCSB20HR

BASIC CYMBAL SET



HCSB1418 [14" Hihat + 18" Crash-Ride]

COMPLETE CYMBAL SET



HCSB141620 [14" Hihat + 16" Crash + 20" Ride]

EXPANDED CYMBAL SET



HCSB14161820 [14" Hihat + 16" Trash Crash + 18" Crash + 20" Ride]

# HCS

MADE IN GERMANY



**O**UR HCS line offers drummers of all ages and levels the highest quality cymbals at an incredible value. Meinl is proud to offer the widest variety of cymbal models and types in this price range, making this a great place to start your cymbal collection or add to it.

Made in Germany from MS63 brass alloy, lathe formed profile, wide blade lathing, and traditional finish.

## BELL



8" HCS8B

## SPLASHES



8" HCS8S 10" HCS10S 12" HCS12S

## TRASH CRASHES



16" HCS16TRC 18" HCS18TRC

## TRASH STACKS

*HCS Trash Stacks provide a cutting attack and are used by drummers of all levels.*



12" HCS12TRS 14" HCS14TRS 16" HCS16TRS

## CHINAS



12" HCS12CH 14" HCS14CH 16" HCS16CH 18" HCS18CH

## TRASH CHINAS



16" HCS16TRCH 18" HCS18TRCH



HIHATS



13" HCS13H 14" HCS14H 15" HCS15H

CRASHES



14" HCS14C 16" HCS16C 18" HCS18C

CRASH-RIDES



18" HCS18CR 20" HCS20CR

RIDES



20" HCS20R 22" HCS22R

BIG BELL RIDE



18" HCS18BBR

BASIC CYMBAL SET



HCS1418 [14" Hihat + 18" Crash-Ride]

COMPLETE CYMBAL SET



HCS141620 [14" Hihat + 16" Crash + 20" Ride]

EXPANDED CYMBAL SET



HCS14161820 [14" Hihat + 16" Trash Crash + 18" Crash + 20" Ride]



# 9eneration X

A SELECTION of small and unconventional cymbals, the Gen-X cymbal line is primarily used for accents and effects. These cymbals can find a home mixed with any of our other cymbal lines for a diverse setup or creation of a stack.

Made in Germany from assorted alloys, lathe formed profile, additional hammering, with various lathing and finishes.



## FX HATS

Available in 8" and 10" pairs, the FX Hats were created to provide a high, cutting, staccato attack when closed tightly and a sharp bark when played loosely. Features a custom brilliant finish with laser engraved tribal artwork.



8" GX-8FXH 10" GX-10FXH



## TRASH HAT

*Benny Greb's signature trash hat*

Created in collaboration with Benny Greb, this is a highly versatile pair of cymbals featuring a 12" sandblasted top over a 14" china. They have a distorted attack, which is perfect for simulating programmed drum sounds in a live setting. Use them as normal or auxiliary hi-hats, stacked multiple ways, or separate them to be played individually as a splash and china.

Trash Hat bottom



12"/14" GX-12/14TH

## X-TREME STACK

Featuring a 12" splash top and 14" china-type bottom with four pairs of attached jingles, the X-treme Stack is a unique pair of cymbals that provides many sound options. Due to the width of the flange on the bottom cymbal and the bell shape of the top cymbal, these two stack together perfectly. When held together tightly, you can get a very crisp attack. When loosened, it replicates the sound of a sampled hand clap. The jingles add just enough sizzle underneath for extra character in the overall sound.

X-Treme Stack bottom



12"/14" GX-12/14XTS

## DRUMBALS

*Johnny Rabb's signature drumbals*

What is a drumbal? A simple tool created from a cymbal. When applied to an acoustic snare drum, it transforms the sound into that of an electronic sample, drum machine snare, or industrial clap. It features a handle in place of the bell hole, and a soundwave edge to prevent airlock. Need to see it to believe it?

Search out 'Meinl Johnny Rabb Drumbal' on our YouTube channel for a quick demo.



8" GX-8DB 10" GX-10DB



## ELECTRO STACKS

*Johnny Rabb's signature stacks*



8"/10" GX-08/10ES 10"/12" GX-10/12ES

## JINGLE FILTER CHINAS

*Thomas Lang's signature chinas*



10" GX-10FCH-J 12" GX-12FCH-J 14" GX-14FCH-J

## FILTER CHINAS

*Thomas Lang's signature chinas*

Long before hole cut-outs were common in cymbals, Meinl introduced Thomas Lang's signature Filter Chinas in 2002. They feature specially sized and positioned holes to dry the sustain for a controlled, trashy effect. Using a unique blend of metals called FX9 alloy, these small-scale chinas were made to have a fast, sharp sound with a size and weight that made them perfect for stacking with other cymbals. The waved edge, alloy and holes reduce the sustain and volume, resulting in a china cymbal with a totally different effect and appearance.



8" GX-8FCH 10" GX-10FCH 12" GX-12FCH 14" GX-14FCH 16" GX-16FCH



# Candela

**M**ADE for percussionists who need cymbals that will easily fit into their unique and individual setups. The splashes, crashes and hihats are thin enough to respond to any stick, mallet or multi-rod as well as your hands, and the timbales crash-ride offers timbaleros a dynamic cymbal with a great bell. The Percussion Jingle Bell is a unique effect that can be used alone or as part of a stack.

Made in Turkey and Germany from assorted bronze alloys, hand-hammered profiles except for the Jingle Bell, and featuring various lathing and finishes.



PERCUSSION SPLASH



10" CA10S

*The brilliant finish found on some Candela models adds shimmer and brilliance to both their sound as well as their look.*

PERCUSSION HIHAT



10" CA10PH

PERCUSSION CRASHES



14" CA14C

16" CA16C

TIMBALES CRASH-RIDE



18" CA18CR

PERCUSSION JINGLE BELL



14" CA14PJB



*With a sandblasted surface, oversized bell, and jingles, the Jingle Bell offers many options for creating unique effect sounds and stacking on a ride.*



# Symphonic Cymbals

HANDCRAFTED MASTERPIECES

**M**EINL Symphonic cymbals are cast from B20 bronze alloy, hand-hammered, and lathed in the same Turkish foundry as the Byzance line. We offer five weights of hand crashes and a wide range of suspended cymbals in multiple sizes enabling you to cover all cymbal applications and requirements needed in symphonic and orchestral music.

Made in Turkey from B20 bronze alloy, hand-hammered into shape, narrow blade lathing, and traditional finish, with straps included.

## TUNING FORK 440 HZ

The Tuning Fork is made in Germany and tuned precisely to the Standard Pitch of 440 Hz. The tuning fork features an ergonomic shaped grip for comfort.



TF-440

## SYMPHONIC CYMBALS THIN

Leather Handles included



16" SY-16T

18" SY-18T

20" SY-20T

22" SY-22T

## SYMPHONIC CYMBALS MEDIUM

Leather Handles included



16" SY-16M

18" SY-18M

20" SY-20M

22" SY-22M

## SYMPHONIC CYMBAL MEDIUM HEAVY

Leather Handles included



19" SY-19MH

## SYMPHONIC CYMBALS HEAVY

Leather Handles included



16" SY-16H

18" SY-18H

20" SY-20H

22" SY-22H

## SYMPHONIC CYMBALS EXTRA HEAVY

Leather Handles included



20" SY-20EH

22" SY-22EH

## SUSPENDED CYMBAL STAND

The Suspended Cymbal Stand is specifically engineered to support the cymbal as it swings freely in all directions, in order to produce its maximum sound. Designed to hold cymbals up to 24" in diameter. A cymbal stacker can be attached on top of the gooseneck for an additional cymbal.



## HAND CYMBAL STAND

Strong and solid design with three double-braced legs. The two padded cymbal cradles are easily adjustable by a standard drum key. A shelf is added between the two cymbal cradles for different drum accessories.



TMHCS

## LEATHER HANDLES

Made from the finest leather to satisfy the highest demands. Perfect grabbing a hold of quickly and recommended for orchestral applications.



BR1 [pair]

## SYMPHONIC SUSPENDED CYMBALS



14" SY-14SUS

16" SY-16SUS

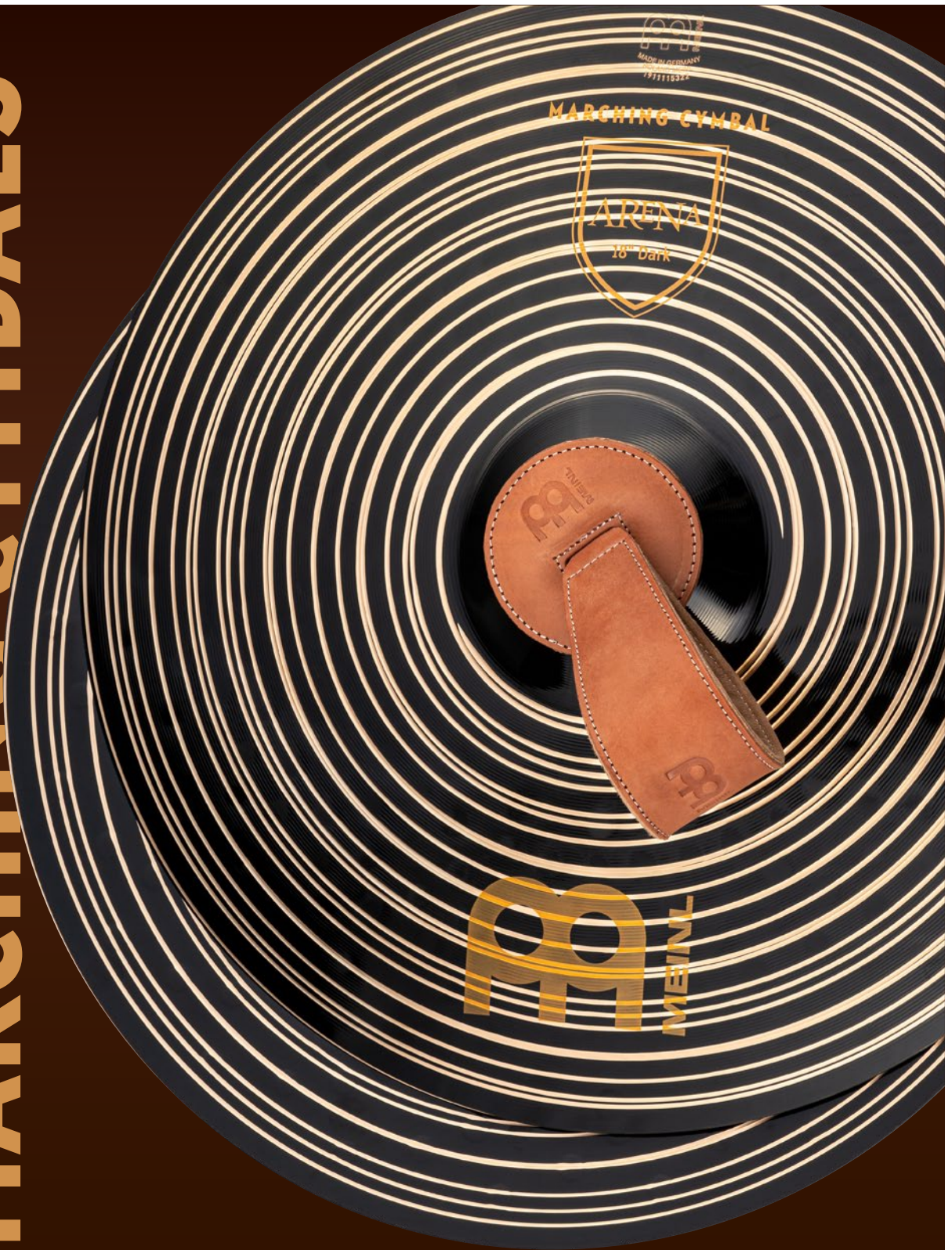
17" SY-17SUS

18" SY-18SUS

20" SY-20SUS

22" SY-22SUS

# MARCHING CYMBALS



**M**ADE in Germany, Meinl's Marching Cymbals cover all aspects of indoor and outdoor drumline and marching band needs ranging from professional groups to schools. Each pair of cymbals has been tonally matched and includes a set of straps. In addition, all models in the professional range feature a brilliant finish to provide a superior visual performance. Various sizes and alloys available.

Made in Germany from assorted alloys, hammered and lathe formed profiles, various lathing and finishes, with straps included.



### PROFESSIONAL RANGE B12

Professional Leather Straps included



16" MA-B12-16M 18" MA-B12-18M 20" MA-B12-20M

### PROFESSIONAL RANGE B10

Professional Leather Straps included



16" MA-B10-16M 18" MA-B10-18M 20" MA-B10-20M

### PROFESSIONAL RANGE ARENA

Professional Leather Straps included



16" MA-AR-16 18" MA-AR-18

### PROFESSIONAL RANGE ARENA DARK

Professional Leather Straps included



18" MA-AR-18DA

### PROFESSIONAL LEATHER STRAPS

Made from the finest leather for the ultimate in comfort. The strap has a soft surface and the pad provides excellent protection for the hands.



BR5 [pair]

### STUDENT RANGE BRONZE

Standard Leather Straps included



14" MA-B0-14M 16" MA-B0-16M 18" MA-B0-18M

### STANDARD LEATHER STRAPS

Standard cymbal strap made from leather. It comes with a pad, which provides excellent protection for the hands.



BR3 [pair]

### STUDENT RANGE BRASS

Standard Leather Straps included



13" MA-BR-13M 14" MA-BR-14M 16" MA-BR-16M 18" MA-BR-18M

### MARCHING LEATHER STRAPS

Specially designed marching leather strap made out of the finest thin leather with extra length in order to easily hold the cymbals in the traditional marching grip.



BR2 [pair]

# CYMBAL BAGS & CASES

## RIPSTOP CYMBAL BAG

Ripstop fabric is both lighter and stronger than that of typical bags. With reinforced stitching on the backpack straps and an external 15" compartment, you can conveniently transport your cymbals hands-free.

**MCB22RS**



## PRO CYMBAL BAGS

These bags have an external 15" compartment (except MCB16), cymbal dividers and a shoulder strap.

**MCB16** up to 16"

**MCB22** up to 22"

**MCB24** up to 24"



## BENNY GREB ARTIST SERIES CYMBAL BAG

With two external compartments, shoulder strap, a second handle, cymbal dividers and much more, Benny's 22" bag is deluxe.

**MCB22-BG**



## GIG CYMBAL BAG

Ideal for casual gigs, this bag has an easy-grip handle and holds cymbals up to 22".

**MSTCB22**



## PRO CYMBAL BACKPACK

This backpack design puts your 22" Professional Cymbal Bag (with added glow-in-the-dark logo) on your back.

**MCB22-BP**



## PERCUSSION BACKPACK

The Meinl Percussion Backpack makes traveling with small percussion instruments a breeze.

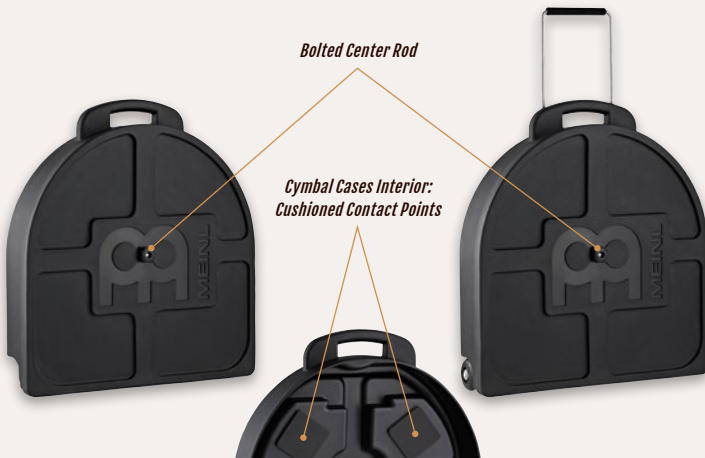
**TMPBP**



## PRO CYMBAL CASE

This 22" hard-shell case is designed for heavy-duty protection, with a through-case center bolt capable of securing approximately 9 cymbals.

**MCC22**



*Bolted Center Rod*

*Cymbal Cases Interior:  
Cushioned Contact Points*

## PRO CYMBAL CASE TROLLEY

A retractable handle and heavy-duty wheels let you pull your cymbals with ease instead of lifting and carrying them.

**MCC22-TR**

## CYMBAL DIVIDERS

These soft dividers protect your cymbals against metal-on-metal damage in any bag or case.

**MCD-14** 2pcs 14" pack

**MCD-22** 2pcs 22" pack



# STICK BAGS, HOLDERS & DRUMMER GLOVES

## STICK SLING BAG

The Meinl Stick Sling Bag is a wider version of our best-selling Pro Stick Bags. Inside are eleven pockets of varying size for any kind of stick, mallet, rod, brush or accessory. An oversized exterior pouch is big enough to fit bulkier items. Carry the loaded bag with its sturdy, reinforced handles or use the adjustable body strap to sling the bag across your body and keep your hands free.

MSSB

NEW



## PRO STICK BAGS

With four sections for sticks and mallets plus a compartment for small tools and other drummer delights, these two padded nylon bags feature an external pocket, shoulder strap and hang straps.

MSB-1 Black

MSB-2 The Horns



## DELUXE STICK BAG

Featuring plenty of room, clear-window pockets and two external pouches, keep all of your sticks, brushes, and mallets in one place. Has two handles plus a strap for easy carry and elastic cord attachments to hang from a drum or stand.

MDLXSB



## DESIGNER STICK BAG

Four spacious stick sections plus room for drum keys and small tools make this a very complete stick carrier.

MSB-1-C1 Camouflage



## COMPACT STICK BAG

This slim sized bag has two sections for four pairs of sticks or mallets making it perfect for saving space.

MCSB



## DRUMSTICK HOLDERS

So you don't miss a beat when you drop a stick, clamp this holder to your hi-hat or cymbal stand so you can quickly grab a stick.

MC-DSH Black

MC-DSH-JB Jawbreaker



## DRUMMER GLOVES

Want a better grip so you avoid stick slip and blisters? Available with or without fingers.

MDG M, L, XL

MDGFL Fingerless M, L, XL



## CYMBAL CLOCK

Made from a real Meinl cymbal, hang this battery powered 10" clock anywhere you want to be inspired to play drums.

MCC-10



Requires one AA battery (not included)

# PRACTICE PADS & MUTES

## PRACTICE PADS

Develop speed, power and precision with the Meinl rapid-rebound practice pads. Carry a 6" pocket-sized pad anywhere, or put a 12" on your snare stand to work on your chops.

Thomas Lang Artist Series Practice Pads

**MPP-6-TL** 6"  
**MPP-12-TL** 12"

Benny Greb Artist Series Masterpads

**MPP-6-BG** 6"  
**MPP-12-BG** 12"

Meinl Practice Pads

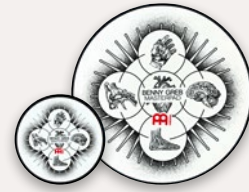
**MPP-6** 6"  
**MPP-12** 12"

Jawbreaker Practice Pads

**MPP-6-JB** 6"  
**MPP-12-JB** 12"



Thomas Lang Artist Series



Benny Greb Artist Series



Meinl



Jawbreaker

## SPLIT TONE PAD

Anike Nilles Artist Series

The Split Tone Pad consists of three distinct surfaces that offer different feels and volume levels, along with a reduced rebound section on the back. It is designed to train more than a simple rudiment. With the Split Tone Pad, you can creatively mold your own systematic approach to advance your consistency, accuracy in unisons, hand independence and muscle strength. The power of this pad is in its ability to train your ears and mind for a better understanding of rhythms.

**MSTP** 12"  
Three playing surfaces  
Bag included



## KNEE PAD MOUNT

Designed in cooperation with Benny Greb.

The Knee Pad Mount allows you to strap most any threaded (8 mm) practice pad around your knee.

**MKPM**



Adjustable strap to secure in place

## DYNAMIC PEDAL PAD

Designed in cooperation with Benny Greb.

Advanced Bass Drum Pedal Practice Pad for Single or Double Kick that responds at any dynamic level and helps you develop control, independence and feel in addition to speed.

**MDPP**



Usable with any bass drum pedal



## 4" KNEE PAD

With its 4" compact size and light weight, this pad sits on your knee and can be secured with the adjustable strap.

**MKPP-4**



Adjustable strap to secure in place

## DYNAMIC PEDAL PAD ATTACHMENT

The Meinl Dynamic Pedal Pad Attachment is a pad surface replacement for the Meinl Dynamic Pedal Pad, which was designed in cooperation with Benny Greb. This pad attachment works for single and double kick practice.

**MDPPA**



**NEW**

## CYMBAL MUTES & DRUM MUTES

Made to fit over your cymbals or lay directly on your drumheads to dampen the vibrations as well as reduce attack and volume. You can practice for hours without disturbing close neighbors.

- MCM-14** 14" Hihat (2pcs)
- MCM-16** 16" Crash
- MCM-18** 18" Crash
- MCM-20** 20" Ride

Available Sets:

- MCM-141620** 14", 16", 20"
- MCM-14161820** 14", 16", 18", 20"

- MDM-10** 10"
- MDM-12** 12"
- MDM-13** 13"
- MDM-14** 14"
- MDM-16** 16"
- MDM-18** 18"

Available Sets:

- MDM-10121414** 10", 12", 14", 14"
- MDM-10121416** 10", 12", 14", 16"
- MDM-12131416** 12", 13", 14", 16"



Mute your cymbals for quiet practicing

## DRUM RUGS

Meinl Drum Rugs are designed specifically for drummers and percussionists with tightly woven fabric that spurs and stands can dig into for a super strong grip. A no-slip rubber bottom keeps the rug from creeping as you play on any surface and is durable to prevent spurs from puncturing through. Each rug comes outfitted with a strap to roll up for easy transport in the included bag.

Drum Rugs: 200 cm (6.5') x 200 cm (6.5')

Wide enough to accommodate a drum throne as well so all hardware legs are on the same surface. Ideal for covering the entire drum riser.

- MDRL-OR** Oriental
- MDRL-BK** Black

Drum Rugs: 160 cm (5.25') x 200 cm (6.5')

Standard size to fit almost all common drum setups.

- MDR-OR** Oriental
- MDR-JB** Jawbreaker
- MDR-ZB** Zebra
- MDR-BK** Black

Drum Rugs: 140 cm (4.6') x 160 cm (5.25')

Compact design is great for smaller setups.

- MDRS-OR** Oriental
- MDRS-BK** Black

E-Drum Rug: 150 cm (4.9') x 160 cm (5.25')

Quick-Set Markers included.

- MDR-E** E-Drum Rug

Large



NEW

NEW



Standard



Small



NEW

NEW



## QUICK-SET MARKERS

Mark the position of your drums and hardware with the hook 'n' loop strips and circles.

- MQSM** 60 strips for hardware  
10 circles for drums



With the E-Drum Rug it's possible to manage cables, plus ensure the rest of your kit and its pedals are securely set in place and will not move.



# DRUM GEAR & HARDWARE

## DRUM HONEY & DRUM HONEY FISHBOWL

Meinl Drum Honey instantly transforms your drum sound into a warm and sweet one with practically no effort. They can be removed from any surface as needed. Vital for session drummers and studio engineers as well as being used in houses of worship and venues where sound control is needed. Drum Honey is washable by using a drop of dish soap and water. Let them air dry (no direct sunlight), and their stickiness will recover. The Meinl Drum Honey is non-toxic.

The Meinl Drum Honey Fishbowl is filled with 16 packs of Drum Honey for easy, impulse purchase. Refill packs are available too, in 6 pack quantities, to easily keep one of our best-selling accessories in stock.

- MDH** Drum Honey
- VE16-MDH** Drum Honey Fishbowl
- VE6-MDH** Refill pack (6pcs)



*They also work great on cymbals*



*Comes with storage box and 7 dividers*

## DRUM HONEY ASSORTMENT

The assortment includes 12 dampening gel pads:  
 6 x small 1,52 cm (0.6")  
 4 x medium 2,54 cm (1")  
 2 x large 3,55 cm (1.4")

**MDHA** Drum Honey Assortment



**NEW**

## MAGNETIC SUSTAIN CONTROL

*Designed in cooperation with Benny Greb.*

Easily control the sustain and dampen the tone of your cymbals, cowbell, or other instrument with the Meinl Magnetic Sustain Control. Simply adjust the effect by positioning the magnets on your instrument.

- MCT**
- 2pcs 16 x 4 mm - light damping
- 2pcs 16 x 9 mm - heavy damping
- With storage barrel



*Simply place the magnets on the cymbal*



## SIZZLE RIVETS

Add some character to the sustain of your cymbal with these sizzling rivets. Simply insert the rivet into the hole, and bend the bottom ends out. These steel rivets come either chrome or brass plated, giving you a wider range of timbres to choose from.

- CY-RIVET** Set of three chrome plated steel rivets
- CY-RIVET-BR** Set of three brass plated steel rivets



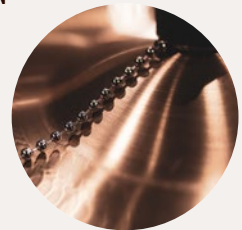
**NEW**

*These are designed to work for cymbals with existing holes. Drilling new holes in your cymbal will void the warranty.*

## CYMBAL BACON

Simply place the chain on top of your cymbal and make it sizzle. Easy to use on any cymbal stand.

**BACON**



## BACKBEAT PRO TAMBOURINES

Featuring a brass ring made from Meinl Cymbal alloy with brass jingles attached, any drummer can add a tambourine effect to a snare backbeat or floor tom rhythm.

- BBP13** 13" in diameter
- BBP14** 14" in diameter



## BENNY GREB ARTIST SERIES HIHAT TAMBOURINE

True to his signature cymbals, the Benny Greb Artist Series HiHat Tambourine features sand blasted jingles that have a dry, vintage sound and unique matte appearance. The eight pairs of brass jingles produce a mellow, yet edged 'ching' effect that will lift any groove.

**HTHHBG**



## CHING RINGS

Incorporate a 'ching' into your grooves by placing one of the three different Meinl Ching Rings directly on your cymbals!

- CRING** 5 pairs of stainless steel jingles, steel ring
- DCRING** 5 pairs of stainless zinc jingles, steel ring
- SCRING** 6 pairs of stainless steel jingles, foam ring



## BYZANCE DRUM KEY – ANTIQUE BRONZE

With its antique bronze plated finish, the Byzance Drum Key is eye-catching and functional. One side shows off the Byzance logo, while the other features the Meinl logo. Easy to tune with, the wing design is wide enough to make quick adjustments or head changes. A key ring hole allows you to attach the key to your everyday set of keys.

**MBKB**



Back

## AJUCH BELLS

Meinl Ajuch Bells are handcrafted from cast brass bells and are available in three sizes for various pitch and tone. Each rope is hand tied and features a solid brass hook to secure the bells onto any hihat, cymbal, drum, or stand. Canvas bag included.

- MABS** Small
- MABM** Medium
- MABL** Large



Small

Medium

Large

## MIKE JOHNSTON ARTIST SERIES GROOVE BELL

The Meinl Mike Johnston Artist Series Groove Bell was developed to offer drummers a cowbell that sits perfectly in the mix of a band while providing the percussive spark required in their grooves. Included are two magnets (one small & one large, based on Benny Greb's Magnetic Sustain Control idea) that dampen the sustain and muffle unwanted ring. The Groove Bell is highlighted with a vintage steel finish.

**MJ-GB**



## CYMBAL STACKERS

Double up the cymbals on any one of your stands with a short or long stacker.

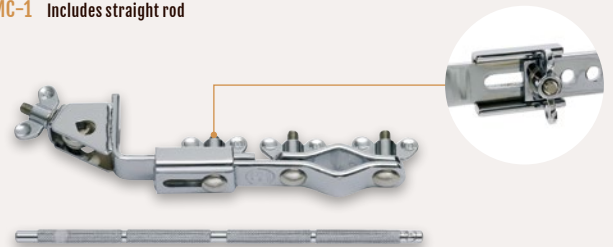
- MC-CYS**  
6 mm thread, long version
- MC-CYS8**  
8 mm thread, long version
- MC-CYS8-S**  
8 mm thread, short version



## MULTI CLAMP, ONE MOUNT

With this length-adjustable clamp and rod you can position a timbale, cowbell, block or mountable tambourine anywhere within your set-up.

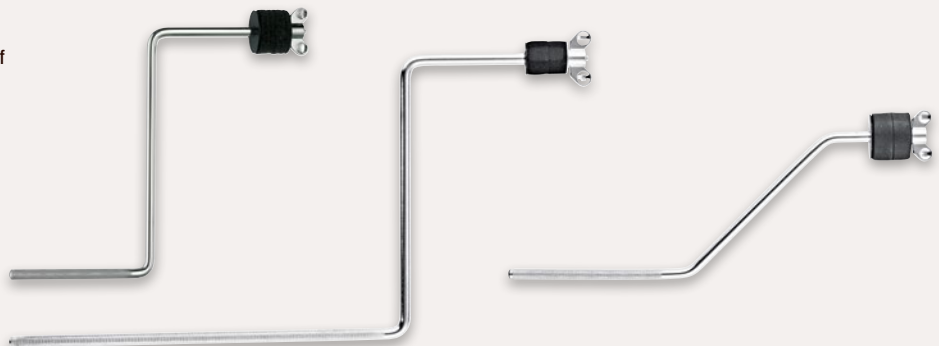
**MC-1** Includes straight rod



## CYMBAL HOLDERS

Instead of getting another cymbal stand, use one of these arms with a Meinl Multi Clamp (not included) to add a cymbal or percussion piece to your kit.

- MC-CY** S-shaped
- MC-CY1** S-shaped, long
- MC-CY2** Z-shaped



# HARDWARE

## X-HAT CYMBAL STAND ADAPTER

Instantly modify any 8 mm threaded cymbal stand into a fixed X-Hat stand. The adapter simply screws on the cymbal stand allowing to add a pair of hi-hats or a cymbal stack whenever is most desired. Clutch is included.

**MXHA**



**NEW**

## X-HAT AUXILIARY HIHAT ARM WITH CLAMP

Add a pair of hi-hats or a cymbal stack to your drum set up with this multi-adjustable attachment.

**MXH**



*Tension adjustment*



## CYMBAL ATTACHMENT

Add another cymbal to your set-up with this multi-clamp and boom-arm combo.

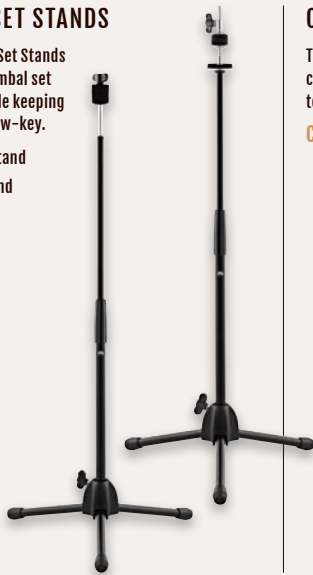
**MCA**



## CAJON DRUM SET STANDS

The Meinl Cajon Drum Set Stands allow you to build a cymbal set around your cajon while keeping your stage footprint low-key.

**CCS** Cajon Cymbal Stand  
**CHS** Cajon Hi-Hat Stand



## CAJON MICROPHONE STAND

The Meinl Cajon Microphone Stand is height adjustable and compatible with any standard microphone. It is designed to offer optimal mic placement for your cajon.

**CMS**



*Height adjustable*

## BASS DRUM MICROPHONE CLAMP

The Meinl Bass Drum Microphone Clamp consists of a U-shape 3/8" diameter rod with threaded end, and a bass drum hoop clamp which are designed to offer optimal mic placement for your bass drum.

**MC-MRBD**



## MICROPHONE CONNECTOR

This rod has a threaded connection for microphones and together with the Meinl Rimclamp (sold separately) makes for easy mic placement around a drum kit or percussion set.

**MC-MR1-S**



## MICROPHONE ADAPTER

Transform your cymbal stand into a microphone stand by threading the Meinl Mic Adapter onto it.

**TMMA** 8 mm threaded attachment



## MICROPHONE ROD COUNTER NUTS

Securely lock your microphone to a rod with these counter nuts keeping everything at the proper angle when attached.

**MRCN5** 5pcs Set



## RIM CLAMP

Grab on to any common drum rim with this clamp to securely mount microphones, accessories, or small cymbals exactly where you need them. Useful in drum set ups, percussion rigs, and on marching drums.

**RIMCLAMP-2**



## FLEXIBLE MICROPHONE GOOSENECK

The flexible microphone gooseneck provides easy mic placement on any drum or percussion instrument.

**FMG**



## MIC RIM CLAMP

The Meinl Rim Clamp and Flexible Microphone Gooseneck are also available as a complete ready-to-go set for easy microphone attachment to any common drum rim.

**RIMCLAMP-M**



## PROFESSIONAL MULTI CLAMP WITH FLEXIBLE MICROPHONE GOOSENECK

The Meinl Professional Multi Clamp was designed to securely attach to Conga Rims but also works on other drums too. The gooseneck, which is included, gives you the ability to place the microphone exactly where you need it in your percussion rig.

**TMPMC-G**

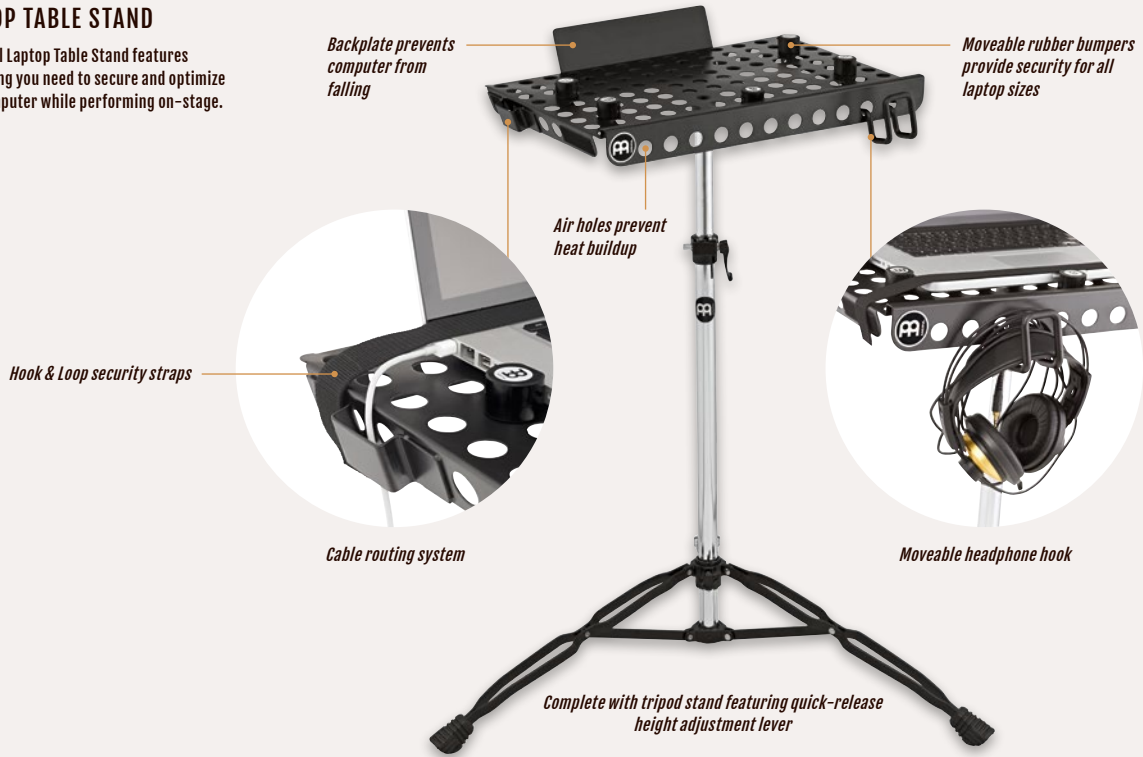




## LAPTOP TABLE STAND

The Meinl Laptop Table Stand features everything you need to secure and optimize your computer while performing on-stage.

**TMLTS**



## PERCUSSION TABLES

Great for holding onstage accessories. Made from durable materials and offer enough room for all common drum gear instruments. The angle of the tables can be adjusted.

**MC-PT-JB** Jawbreaker 18" x 12"

**MC-PTS** 12" x 12"

**MC-PTXS** 11" x 7"



# CLEAN & PROTECT

### CYMBAL CLEANER

Ideal for cleaning Brilliant and Traditional finish cymbals.

**MCCL**



### CYMBAL POLISH

Cleans and polishes Brilliant finish cymbals.

**MCP**



### CYMBAL PROTECTANT

Seals and protects cymbal surface.

**MCPR**



### CYMBAL CARE KITS

Keep your cymbals looking like new using these cymbal care kits.

**MCCK-MCCL**  
Cymbal Cleaner  
& Cymbal Protectant

**MCCK-MCP**  
Cymbal Polish  
& Cymbal Protectant

Both kits include  
**FREE** Meinl Cymbal Gloves.



### CYMBAL GLOVES

Made from 100% cotton, use these gloves to prevent fingerprints or oils on the surface of your cymbals.

**MHS-WH**





All features are subject to change without notice.  
Not responsible for typographic errors. No part of this  
catalogue may be reprinted, reproduced, or included  
in any online service in any form in whole or in part,  
without the prior permission of Meinl.

© 2021 Roland Meinl Musikinstrumente GmbH & Co. KG

#### CONCEPT & DESIGN

ercas GmbH & Co. KG  
[www.ercasdieagentur.de]

#### CONTENT & DIRECTION

Norbert Saemann, Udo Heubeck

#### COPYWRITING

Gabriel Harris, Ayrton Gauerke, Norbert Saemann

#### PHOTOGRAPHY

Sebastian Jäger, Christian Habermeier  
[www.studio-waldeck.de]

Tobias Winklmann, Henrik Bergerbusch,  
Norbert Saemann, Gerhard Kühne, Sven Peks,  
Josefa Torres, Jude Aotik, Tobias Merkle

#### LITHOGRAPHY

Sven Mihm [www.mihm-werbung.de]

#### GLOBAL HEADQUARTERS

Roland Meinl Musikinstrumente GmbH & Co. KG  
Musik-Meinl-Straße 1  
91468 Gutenstetten  
Germany  
info@meinlcymbals.com

#### US HEADQUARTER

Meinl USA L.C.  
3427 Ambrose Avenue  
Nashville, TN 37207  
USA  
info@meinlusa.com

Printed in Germany M-CA151220



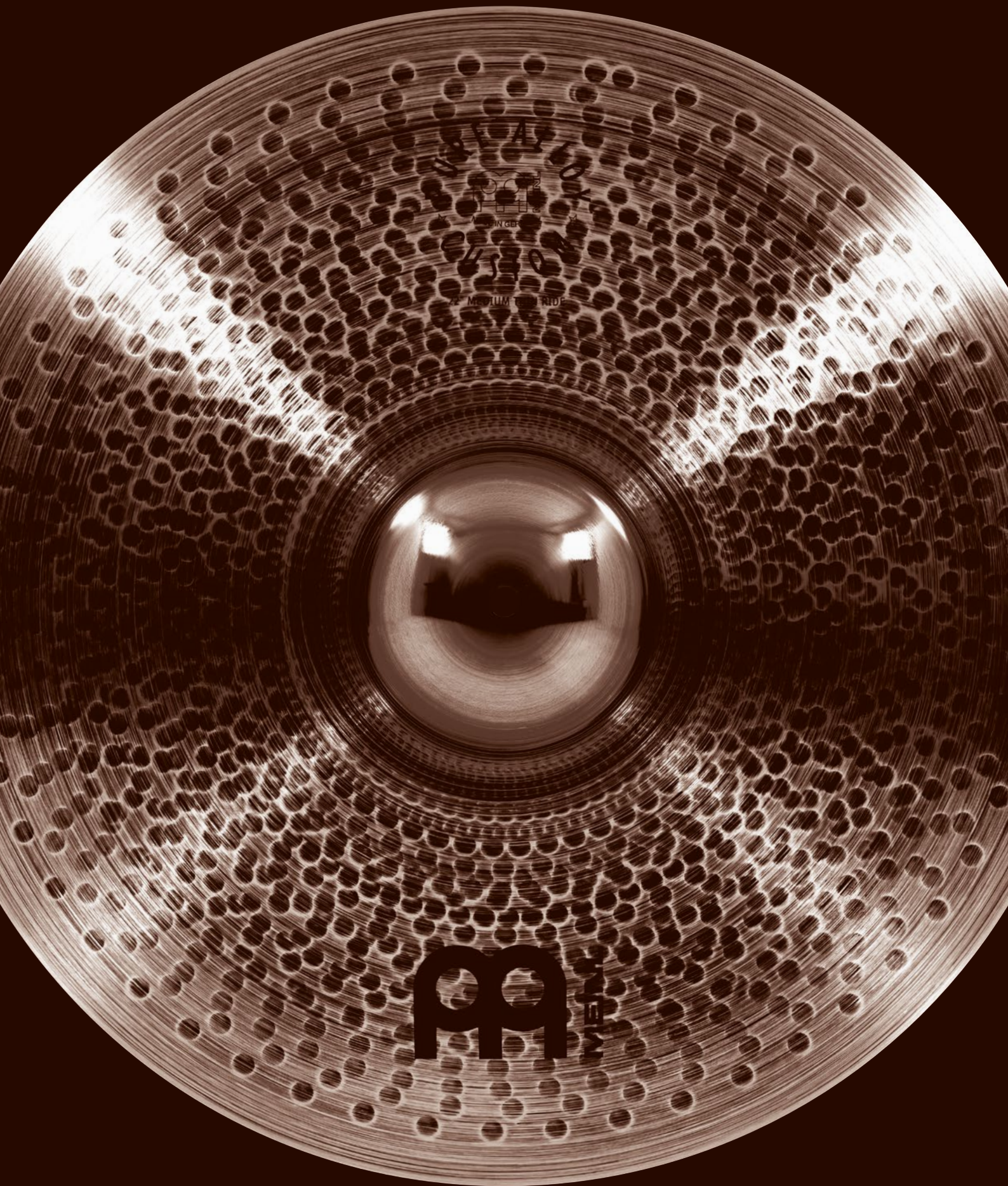
DID YOU KNOW MEINL ALSO OFFERS  
HIGH-QUALITY DRUMSTICKS, BRUSHES,  
MULTI-RODS AND MORE?

Visit [meinlstickandbrush.com](http://meinlstickandbrush.com)  
for more info.



MADE IN GERMANY  
ROLAND MEINL  
191003316

**MEINL**



**PP**

WEISS

CYM-CATALOG21



8 42960 10673 2